



VectorBlox™ Video Kit Demo Guide V1.1

Purpose

This demo is for CoreVectorBlox neural network acceleration on the PolarFire® field-programmable gate array (FPGA) devices. This document provides instructions on how to use the corresponding reference design.

Intended Audience

This demo guide is intended for:

- FPGA designers
- Firmware designers
- System level designers
- Data scientists

References

The following documents are referred in this demo guide.

- *CoreVectorBlox SDK Programmer's Guide*
- *CoreVectorBlox IP Handbook*

Table of Contents

Purpose.....	1
Intended Audience.....	1
References.....	1
1. Introduction.....	3
2. Design Requirements.....	4
3. Development Kit for Demo.....	5
4. Demo Design Description.....	6
4.1. System Design.....	6
5. Setting Up the Demo.....	7
5.1. Setting Up the Hardware.....	7
5.2. Programming the PolarFire Device.....	7
6. Running Alternate Models.....	11
6.1. Obtaining Model File.....	11
6.2. Modifying the SPI Flash Configuration.....	11
6.3. SoftConsole Project.....	11
6.4. Running the Mi-V Program.....	12
7. Revision History.....	13
The Microchip Website.....	14
Product Change Notification Service.....	14
Customer Support.....	14
Microchip Devices Code Protection Feature.....	14
Legal Notice.....	14
Trademarks.....	15
Quality Management System.....	15
Worldwide Sales and Service.....	16

1. Introduction

This document describes how to run the CoreVectorBlox Neural Network using the PolarFire Video Kit, the Dual Camera sensor module, and an HDMI monitor. The demo design features a fully integrated solution developed using Microchip Libero[®] SoC software to help customers evaluate PolarFire FPGA in Neural Network Vision applications and to build prototypes quickly. For more information, see [Smart Embedded Vision](#).

The demo demonstrates the following functions:

- MIPI CSI-2 RX to read one of the cameras
- HDMI display controller
- VectorBlox CNN acceleration of Tiny YOLOv3
- VectorBlox CNN acceleration of MobileNet V1
- Image enhancements such as contrast, brightness, and color balance

The PolarFire Video Kit (MPF300-VIDEO-KIT-NS) includes the following components:

- A 300K LE FPGA (MPF300T, FCG1152)
- HDMI 1.4 transmitter (ADV7511) chipset and corresponding connector
- HDMI 2.0 with rail clamps, ReDrivers, and corresponding connectors
- Dual camera sensor featuring IMX334 Sony image sensor
- Image sensor interface to support up to two MIPI CSI-2 cameras
- Display Serial Interface (DSI)
- NVIDIA[®] Jetson interface (MIPI CSI-2 TX connector)
- A High Pin Count (HPC) FMC connector to connect to high-speed interfaces (such as 12G-SDI and USXGMII)

For more information about the video kit, see [PolarFire FPGA Video and Imaging Kit](#).

2. Design Requirements

The following table lists the hardware and software required to run the demo.

Design Requirements	Description
Hardware Requirements	
PolarFire Video Kit Development Board	MPF300-VIDEO-KIT-NS
USB A to mini-B cable ⁽¹⁾	Required for the following: <ul style="list-style-type: none"> FPGA programming and SPI Flash programming Running the modified Mi-V C code from SoftConsole
HDMI cable ⁽¹⁾	HDMI A Male to Male cable
Power adapter ⁽¹⁾	12V, 5A
HDMI monitor	A 1920 x1080 60 Hz resolution monitor for the HDMI 1.4 TX port
Host PC	A host PC with a USB port
Software Requirements	
Libero [®] System-on-Chip (SoC) v12.6	You must install the full Libero SoC software and not just the programming tools to program the SPI Flash, which cannot be done from FPEXpress. A Libero license is necessary; the video kit comes with a Gold license or an evaluation license that can be obtained from the Licensing tab of the following page. Libero SoC v12.0 and later
CoreVectorblox License	To configure and synthesize the CoreVectorblox IP, a license is required. It is available at SoC portal .

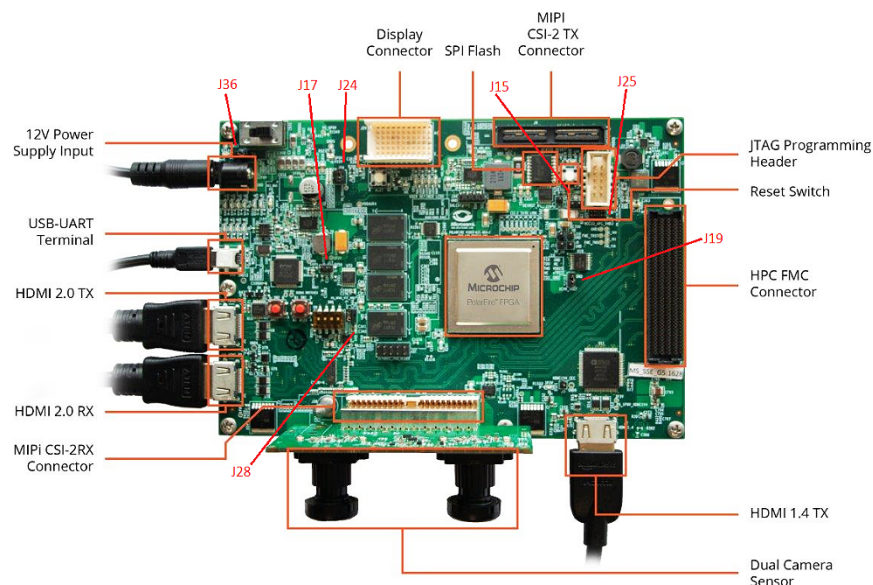
Note:

1. Included with the PolarFire Video Kit.

3. Development Kit for Demo

The following figure highlights the features of PolarFire Video Kit.

Figure 3-1. PolarFire Video Kit Features



The following table provides the jumper position and functionality for the jumper settings.

Table 3-1. Jumper Description

Jumper	Default Position	Functionality
J15	Open	SPI Slave and Master mode selection. Default: SPI master.
J17	Open	100K PD for TRSTn. Default: 1K PD is connected.
J19	Pin1 and 2	Default: XCVR_VREF is connected to GND.
J28	Pin 1 and 2	Default: Programming through the FTDI.
J24	Pin 2 and 4	Default: VDDAUX4 voltage is set to 3V3.
J25	Pin 5 and 6	Default: Bank4 voltage is set to 1V8.
J36	Pin 1 and 2	Default: Board power up through SW4.

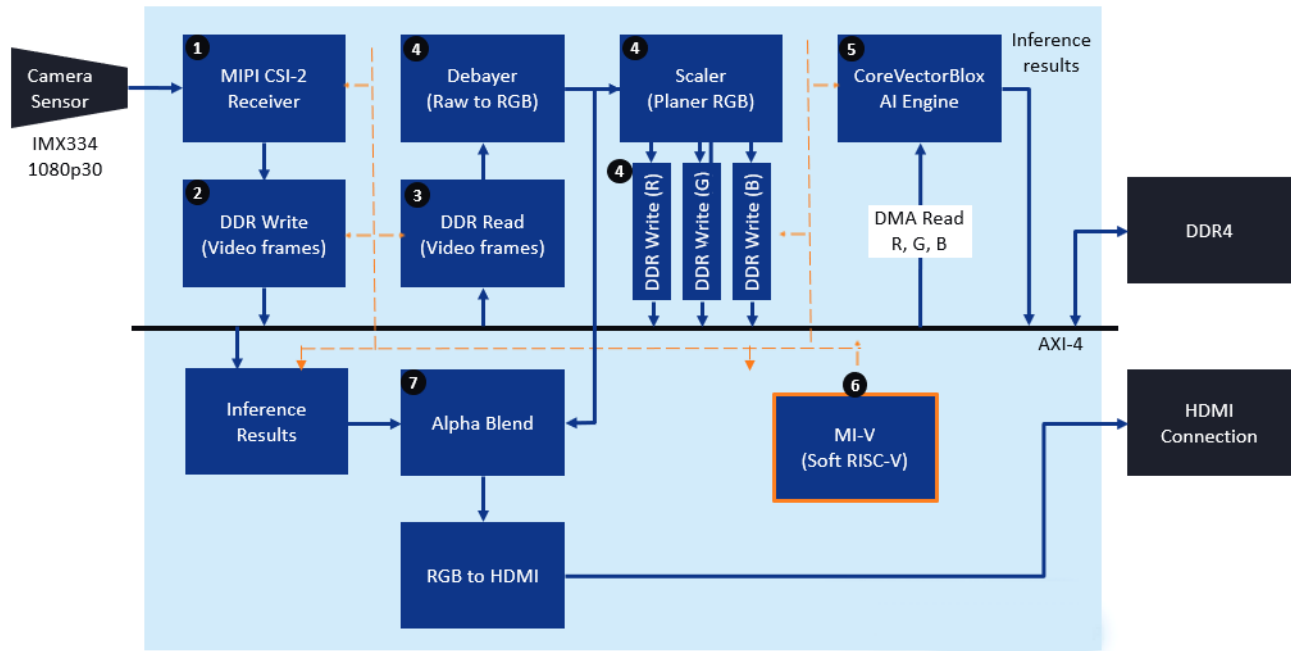
4. Demo Design Description

The following section provides an overview of the dataflow in the demo design.

4.1 System Design

The following diagram illustrates an overview of the dataflow in the design.

Figure 4-1. System Dataflow



Sequence of dataflow shown in the figure above is as follows:

1. Video frame is received through MIPI CSI-2.
2. It is stored in DDR through AXI-4 interconnect.
3. Before inference—the frame is read back from DDR.
4. Converted from RAW to RGB, RGB to planer R, G, B and written back into DDR.
5. CoreVectorBlox engine runs inference on R, G, B arrays and writes results back into DDR.
6. Mi-V sorts probabilities, creates an overlay frame with bounding boxes, classification results, fps etc. and stores the frame in DDR.
7. The original video frame, as read in step 3, is blended with the overlay frame and sent out to an HDMI display.

5. Setting Up the Demo

The following steps describe how to setup the demo.

1. Setting up the Hardware
2. Programming the PolarFire Device
3. Programming the SPI Flash

5.1 Setting Up the Hardware

Setting up the hardware involves interfacing the dual camera sensor module and the HDMI monitor with the PolarFire Video Kit, and verifying the jumper settings.

Perform the following steps.

1. Connect the J1 connector of the dual camera sensor module to the J5 interface of the video kit. The video kit is already shipped with this.
2. Connect the Full HD HDMI monitor to J2 (HDMI 1.4 TX port) of the video kit using the HDMI cable.
3. Connect the host PC to J12 of the video kit using the USB mini cable.
4. Connect the power supply cable to J20 of the video kit.
5. Ensure that the jumper settings are set on the video kit. The video kit is shipped in this configuration. For jumper position and functionality, see [Table 3-1](#).
6. Power-up the HDMI monitor.
7. Power-up the board using the SW4 slide switch.

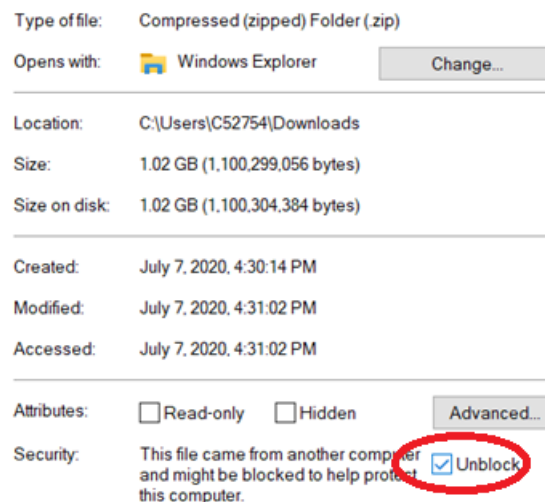
The PolarFire dual camera video and imaging hardware set up is completed.

5.2 Programming the PolarFire Device

The following section describes how to program the PolarFire device and run the demo.

5.2.1 Extracting the Source files and Opening the Project

Before unzipping the archive containing the libero project, first “unblock” the file. This is necessary to ensure that Windows does not change the timestamps of the files during extraction. To unblock the file, right click the zip file, select **Properties** and check **Unblock**, then click **OK**.



After unzipping the archive, launch Libero SoC v12.6, and open the `vectorblox_videokit_v1.1/vectorblox_videokit_v1.1.prjx` project file.

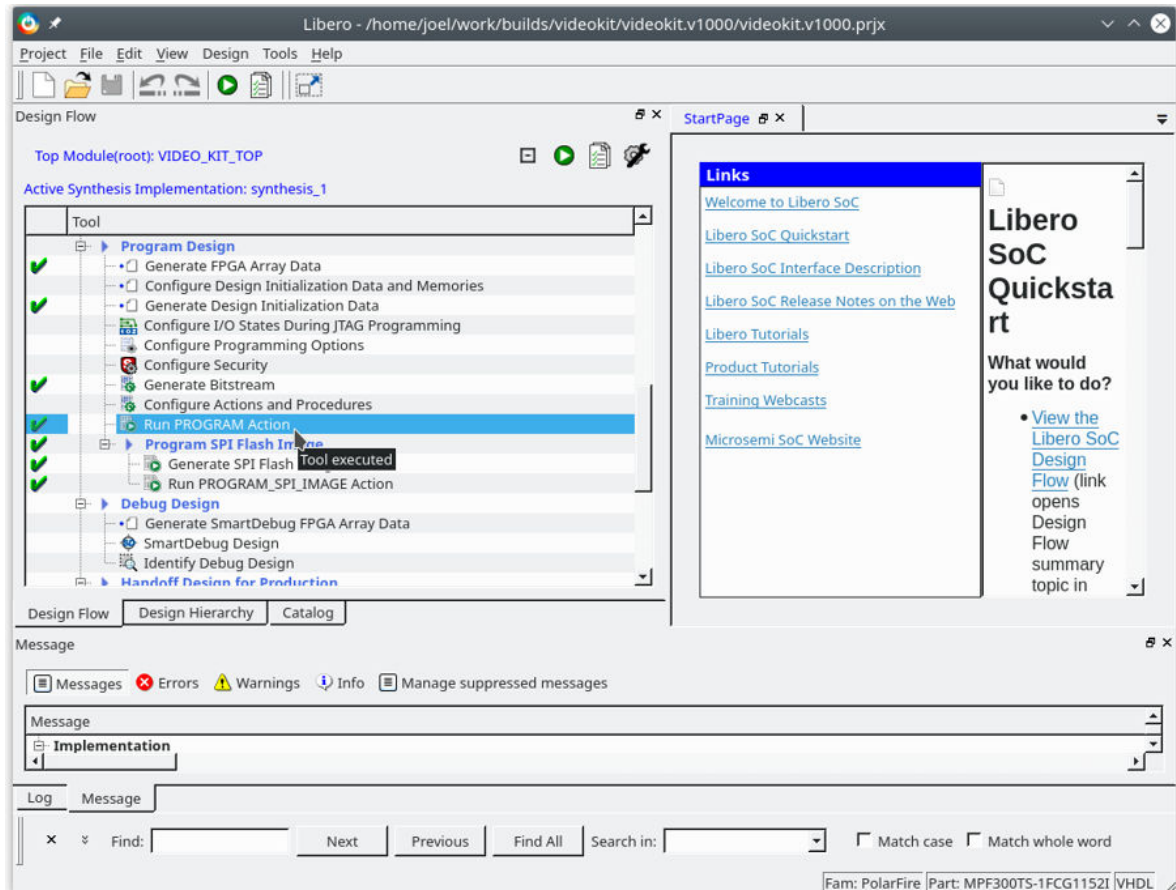
Note: You may be prompted to update Libero SoC or individual IP cores, ignore these prompts.

5.2.2 Programming the Device

Perform the following steps.

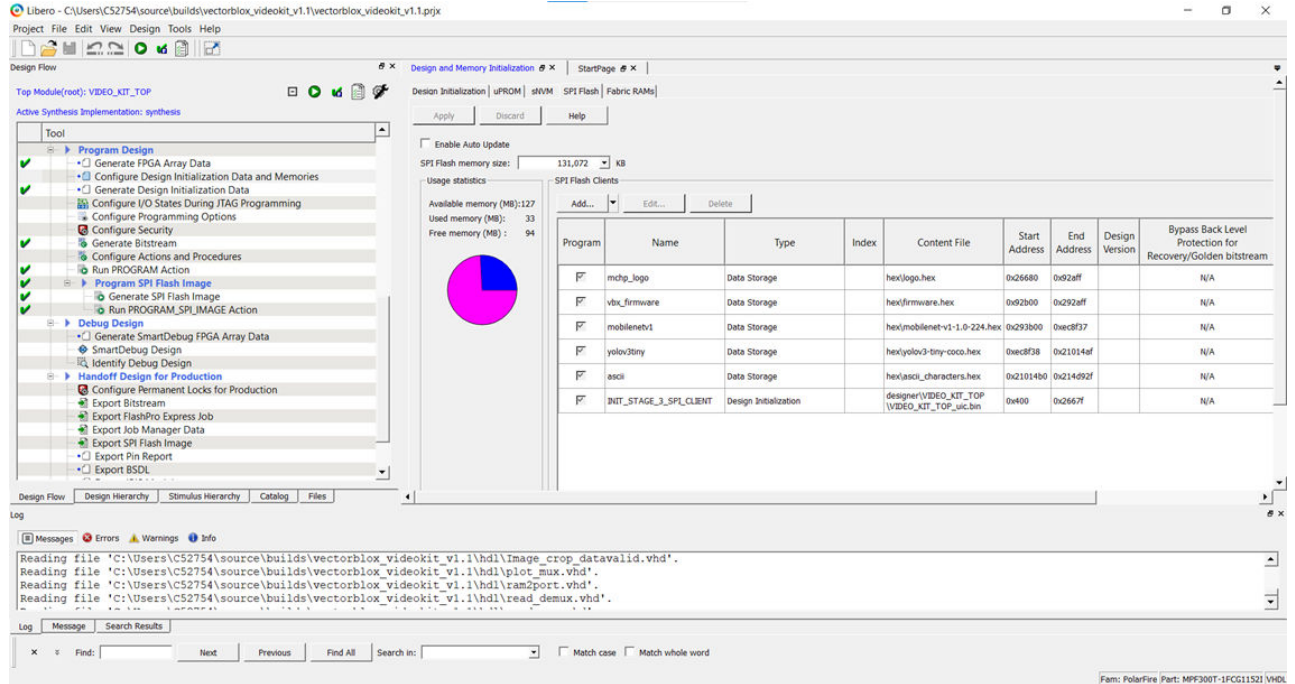
1. In the **Design Flow** window, double click **Run PROGRAM Action**.

Figure 5-1. Run PROGRAM ACTION



- To program the SPI Flash, double click **Configure Design Initialization Data and Memories**.
Note: The model and firmware files are configured to be programmed into the SPI Flash chip. There are other files listed (`ascii_characters.hex` and `logo.hex`) that are used for drawing the results of the models onto the HDMI connected screen.

Figure 5-2. Configure Design Initialization Data and Memories



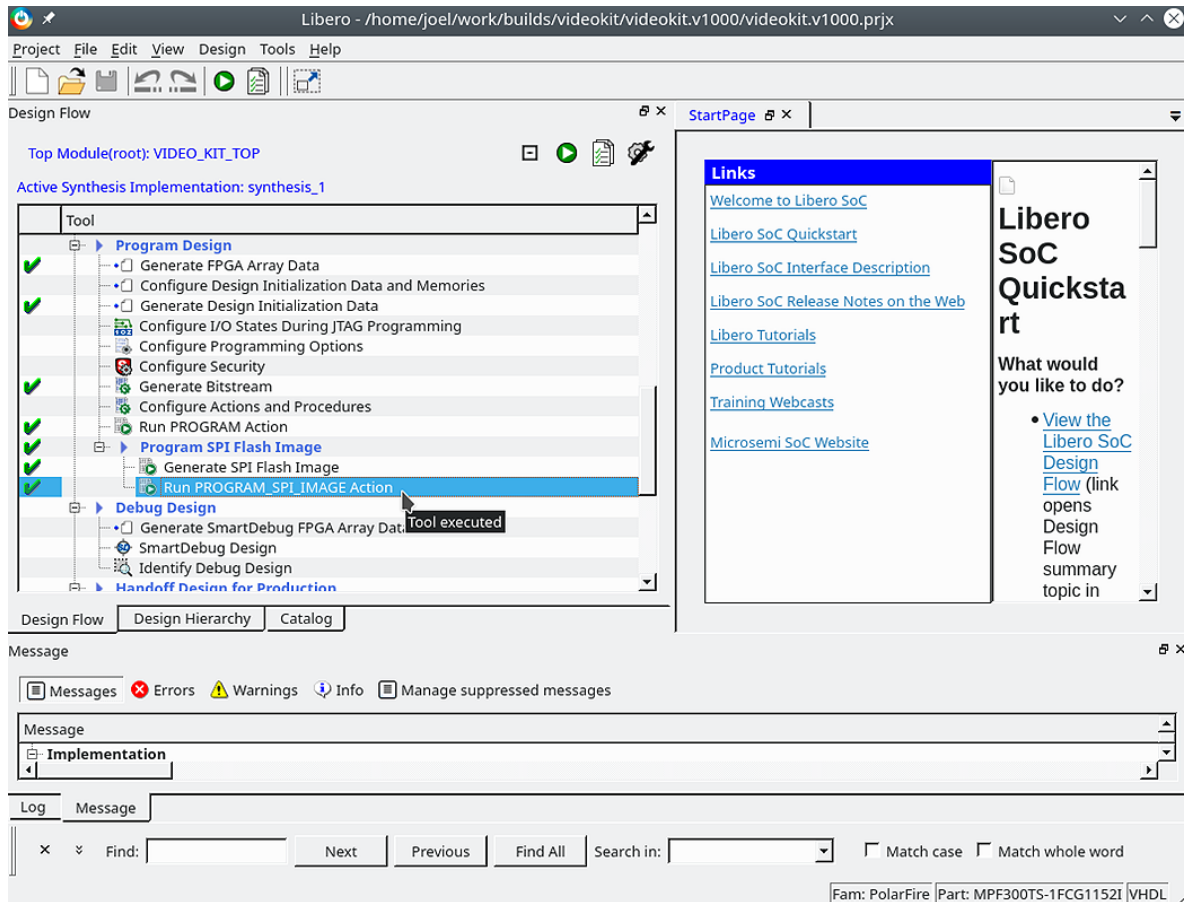
Refer to the following table for contents in the SPI Flash Hex file.

Table 5-1. SPI Flash Contents

Name	Description
vbv_firmware	CoreVectorBlox firmware BLOB
ascii	Character set for overlay display
mobilenetV1	MobileNetV1 model BLOB
yolov3tiny	Tiny YOLOv3 model BLOB
mchp_logo	Microchip logo for overlay display
INIT_STAGE_3_SPI_CLIENT	Mi-V demo code

3. Double click **Run PROGRAM_SPI_IMAGE Action** and wait. This will take some time.
Note: In Windows, you might be prompted with a firewall popup.

Figure 5-3. Run PROGRAM_SPI_IMAGE Action



5.2.3 Running the Demo

Power cycle the board with SW4 to start the demo.

The startup might take a few minutes. The following events occur during the startup: the camera is calibrated to the brightness of the environment, the firmware and models are read from the Flash into DDR, and the models are tested with the test data.

After the startup is completed, the demo will switch every 5 seconds between MobileNet V1 and TinyYoloV3.

6. Running Alternate Models

The project that is provided here runs only two models: MobileNet V1 and Tiny YOLOv3. However, it is capable of running many other networks. In this document, you will see an example of swapping out Tiny YOLOv3 for Tiny YOLOv2.

Currently, post-processing routines exist for TinyYoloV2 (VOC), TinyYoloV3 (COCO), and Imagenet networks. Users will have to write additional post-processing code to run other networks.

The following sections describe how to run the alternate models.

6.1 Obtaining Model File

The model files can be obtained by running the tutorial available in the VectorBlox SDK in [Github](#). Instructions for running the tutorials can be found in the Programmer's Guide available as part of the SDK documentation. The artifact generated from the tutorial that needs to be stored is `yolov2-tiny-voc.hex`. This hex file will be added to the SPI Flash on the board.

6.2 Modifying the SPI Flash Configuration

Perform the following steps in Libero.

1. To change the file pointed to by the YOLO data client to the generated file, highlight the `TinyYoloV3.hex`, click the **Edit** button, and change the path to point to `yolov2-tiny-voc.hex` (file described in the preceding section, [Obtaining Model File](#)).
Note: Ensure the address range does not overlap with other clients in the Flash memory.
2. Click **Apply**.
3. In the **Design Flow** window, double click **Run PROGRAM_SPI_FLASH** Action (see [Step 3](#) in the Programming the Device section).
4. After the SPI programming is complete, power cycle the board using SW4.

Figure 6-1. SPI Configuration after Modification

Design Initialization | uPROM | sNVM | SPI Flash* | Fabric RAMs

Apply Discard Help

☐ Enable Auto Update

SPI Flash memory size: 131,072 KB

Usage statistics: Available memory (MB): 127, Used memory (MB): 45, Free memory (MB): 82

SPI Flash Clients

Program	Name	Type	Index	Content File	Start Address	End Address	Design Version	Bypass Back Level Protection for Recovery/Golden bitstream
<input checked="" type="checkbox"/>	mchp_logo	Data Storage		hex\logo.hex	0x26680	0x92aff		N/A
<input checked="" type="checkbox"/>	vbx_firmware	Data Storage		hex\firmware.hex	0x92b00	0x292aff		N/A
<input checked="" type="checkbox"/>	mobilenetv1	Data Storage		hex\mobilenet-v1-1.0-224.hex	0x293b00	0xec8f37		N/A
<input checked="" type="checkbox"/>	yolov3tiny	Data Storage		..\..\..\Downloads\yolov2-tiny-voc.hex	0x214d930	0x402665f		N/A
<input checked="" type="checkbox"/>	ascii	Data Storage		hex\ascii_characters.hex	0x21014b0	0x214d92f		N/A
<input checked="" type="checkbox"/>	INIT_STAGE_3_SPI_CLIENT	Design Initialization		designer\VIDEO_KIT_TOP\VIDEO_KIT_TOP_uic.bin	0x400	0x2667f		N/A

6.3 SoftConsole Project

Before the new model is run on the FPGA, the software running on Mi-V must be modified as described in this section.

A SoftConsole project is located in the Libero Design zip archive at `Download_Directory/vectorblox_videokit_v1.1/softconsole`. Open that directory as a workspace with [SoftConsole 6.2 or later](#).

In the VideoKit project locate and open `main.c`. The following code can be seen on line 289.

```
struct model_descr_t models[] = {
    {"MobileNet V1", 0x293b00, 224, IMAGENET, 10},
    {"Tiny Yolo V3 COCO", 0xec8f38, 416, TINYYOLOV3, 30},
};
```

Change the code to the following.


```
struct model_descr_t models[] = {
    {"MobileNet V1", 0x293b00, 224, IMAGENET, 10},
    {"Tiny Yolo V2 VOC", 0x214d930, 416, TINYYOLOV2, 30},
};
```

Where, parameters in the structure are as follows:

- Display name of the model
- Address in the SPI Memory in which the model is stored.
- Resolution of the square input image needed for the network.
Note: Resolution of the network should be documented by the network provider. For instance, OpenVino's open-model-zoo; it can link to https://github.com/openvinotoolkit/open_model_zoo.
- The type of postprocessing for displaying the network. Currently, IMAGENET (Resnet/Mobilenet/etc.), TinyYoloV2, and TinyYoloV3 are implemented.
- The maximum number of frames per second to display. Used to reduce the rate of change of displayed labels to make the network output readable.

After these modifications are performed, save the `main.c` file, and build the project. The software is now ready to run and models can be executed.

6.4 Running the Mi-V Program

To run the Mi-V program, click the  button in the toolbar.

7. Revision History

The revision history describes the changes that were implemented in the document. The changes are listed by revision, starting with the most current publication.

Revision	Date	Description
C	05/2021	Updated to 1.1 Release
B	11/2020	Updated to 1.0 Release
A	08/2020	Initial Revision

The Microchip Website

Microchip provides online support via our website at www.microchip.com/. This website is used to make files and information easily available to customers. Some of the content available includes:

- **Product Support** – Data sheets and errata, application notes and sample programs, design resources, user's guides and hardware support documents, latest software releases and archived software
- **General Technical Support** – Frequently Asked Questions (FAQs), technical support requests, online discussion groups, Microchip design partner program member listing
- **Business of Microchip** – Product selector and ordering guides, latest Microchip press releases, listing of seminars and events, listings of Microchip sales offices, distributors and factory representatives

Product Change Notification Service

Microchip's product change notification service helps keep customers current on Microchip products. Subscribers will receive email notification whenever there are changes, updates, revisions or errata related to a specified product family or development tool of interest.

To register, go to www.microchip.com/pcn and follow the registration instructions.

Customer Support

Users of Microchip products can receive assistance through several channels:

- Distributor or Representative
- Local Sales Office
- Embedded Solutions Engineer (ESE)
- Technical Support

Customers should contact their distributor, representative or ESE for support. Local sales offices are also available to help customers. A listing of sales offices and locations is included in this document.

Technical support is available through the website at: www.microchip.com/support

Microchip Devices Code Protection Feature

Note the following details of the code protection feature on Microchip devices:

- Microchip products meet the specification contained in their particular Microchip Data Sheet.
- Microchip believes that its family of products is one of the most secure families of its kind on the market today, when used in the intended manner and under normal conditions.
- There are dishonest and possibly illegal methods used to breach the code protection feature. All of these methods, to our knowledge, require using the Microchip products in a manner outside the operating specifications contained in Microchip's Data Sheets. Most likely, the person doing so is engaged in theft of intellectual property.
- Microchip is willing to work with the customer who is concerned about the integrity of their code.
- Neither Microchip nor any other semiconductor manufacturer can guarantee the security of their code. Code protection does not mean that we are guaranteeing the product as "unbreakable."

Code protection is constantly evolving. We at Microchip are committed to continuously improving the code protection features of our products. Attempts to break Microchip's code protection feature may be a violation of the Digital Millennium Copyright Act. If such acts allow unauthorized access to your software or other copyrighted work, you may have a right to sue for relief under that Act.

Legal Notice

Information contained in this publication regarding device applications and the like is provided only for your convenience and may be superseded by updates. It is your responsibility to ensure that your application meets with

your specifications. MICROCHIP MAKES NO REPRESENTATIONS OR WARRANTIES OF ANY KIND WHETHER EXPRESS OR IMPLIED, WRITTEN OR ORAL, STATUTORY OR OTHERWISE, RELATED TO THE INFORMATION, INCLUDING BUT NOT LIMITED TO ITS CONDITION, QUALITY, PERFORMANCE, MERCHANTABILITY OR FITNESS FOR PURPOSE. Microchip disclaims all liability arising from this information and its use. Use of Microchip devices in life support and/or safety applications is entirely at the buyer's risk, and the buyer agrees to defend, indemnify and hold harmless Microchip from any and all damages, claims, suits, or expenses resulting from such use. No licenses are conveyed, implicitly or otherwise, under any Microchip intellectual property rights unless otherwise stated.

Trademarks

The Microchip name and logo, the Microchip logo, Adaptec, AnyRate, AVR, AVR logo, AVR Freaks, BesTime, BitCloud, chipKIT, chipKIT logo, CryptoMemory, CryptoRF, dsPIC, FlashFlex, flexPWR, HELDO, IGLOO, JukeBlox, KeeLoq, Klear, LANCheck, LinkMD, maXStylus, maXTouch, MediaLB, megaAVR, Microsemi, Microsemi logo, MOST, MOST logo, MPLAB, OptoLyzer, PackeTime, PIC, picoPower, PICSTART, PIC32 logo, PolarFire, Prochip Designer, QTouch, SAM-BA, SenGenuity, SpyNIC, SST, SST Logo, SuperFlash, Symmetricom, SyncServer, Tachyon, TempTrackr, TimeSource, tinyAVR, UNI/O, Vectron, and XMEGA are registered trademarks of Microchip Technology Incorporated in the U.S.A. and other countries.

APT, ClockWorks, The Embedded Control Solutions Company, EtherSynch, FlashTec, Hyper Speed Control, HyperLight Load, IntelliMOS, Libero, motorBench, mTouch, Powermite 3, Precision Edge, ProASIC, ProASIC Plus, ProASIC Plus logo, Quiet-Wire, SmartFusion, SyncWorld, Temux, TimeCesium, TimeHub, TimePictra, TimeProvider, Vite, WinPath, and ZL are registered trademarks of Microchip Technology Incorporated in the U.S.A.

Adjacent Key Suppression, AKS, Analog-for-the-Digital Age, Any Capacitor, AnyIn, AnyOut, BlueSky, BodyCom, CodeGuard, CryptoAuthentication, CryptoAutomotive, CryptoCompanion, CryptoController, dsPICDEM, dsPICDEM.net, Dynamic Average Matching, DAM, ECAN, EtherGREEN, In-Circuit Serial Programming, ICSP, INICnet, Inter-Chip Connectivity, JitterBlocker, KlearNet, KlearNet logo, memBrain, Mindi, MiWi, MPASM, MPF, MPLAB Certified logo, MPLIB, MPLINK, MultiTRAK, NetDetach, Omniscient Code Generation, PICDEM, PICDEM.net, PICkit, PICtail, PowerSmart, PureSilicon, QMatrix, REAL ICE, Ripple Blocker, SAM-ICE, Serial Quad I/O, SMART-I.S., SQL, SuperSwitcher, SuperSwitcher II, Total Endurance, TSHARC, USBCheck, VariSense, ViewSpan, WiperLock, Wireless DNA, and ZENA are trademarks of Microchip Technology Incorporated in the U.S.A. and other countries.

SQTP is a service mark of Microchip Technology Incorporated in the U.S.A.

The Adaptec logo, Frequency on Demand, Silicon Storage Technology, and Symmcom are registered trademarks of Microchip Technology Inc. in other countries.

GestIC is a registered trademark of Microchip Technology Germany II GmbH & Co. KG, a subsidiary of Microchip Technology Inc., in other countries.

All other trademarks mentioned herein are property of their respective companies.

© 2021, Microchip Technology Incorporated, Printed in the U.S.A., All Rights Reserved.

ISBN: 978-1-5224-8209-3

Quality Management System

For information regarding Microchip's Quality Management Systems, please visit www.microchip.com/quality.

Worldwide Sales and Service

AMERICAS	ASIA/PACIFIC	ASIA/PACIFIC	EUROPE
Corporate Office 2355 West Chandler Blvd. Chandler, AZ 85224-6199 Tel: 480-792-7200 Fax: 480-792-7277 Technical Support: www.microchip.com/support Web Address: www.microchip.com	Australia - Sydney Tel: 61-2-9868-6733 China - Beijing Tel: 86-10-8569-7000 China - Chengdu Tel: 86-28-8665-5511 China - Chongqing Tel: 86-23-8980-9588 China - Dongguan Tel: 86-769-8702-9880 China - Guangzhou Tel: 86-20-8755-8029 China - Hangzhou Tel: 86-571-8792-8115 China - Hong Kong SAR Tel: 852-2943-5100 China - Nanjing Tel: 86-25-8473-2460 China - Qingdao Tel: 86-532-8502-7355 China - Shanghai Tel: 86-21-3326-8000 China - Shenyang Tel: 86-24-2334-2829 China - Shenzhen Tel: 86-755-8864-2200 China - Suzhou Tel: 86-186-6233-1526 China - Wuhan Tel: 86-27-5980-5300 China - Xian Tel: 86-29-8833-7252 China - Xiamen Tel: 86-592-2388138 China - Zhuhai Tel: 86-756-3210040	India - Bangalore Tel: 91-80-3090-4444 India - New Delhi Tel: 91-11-4160-8631 India - Pune Tel: 91-20-4121-0141 Japan - Osaka Tel: 81-6-6152-7160 Japan - Tokyo Tel: 81-3-6880-3770 Korea - Daegu Tel: 82-53-744-4301 Korea - Seoul Tel: 82-2-554-7200 Malaysia - Kuala Lumpur Tel: 60-3-7651-7906 Malaysia - Penang Tel: 60-4-227-8870 Philippines - Manila Tel: 63-2-634-9065 Singapore Tel: 65-6334-8870 Taiwan - Hsin Chu Tel: 886-3-577-8366 Taiwan - Kaohsiung Tel: 886-7-213-7830 Taiwan - Taipei Tel: 886-2-2508-8600 Thailand - Bangkok Tel: 66-2-694-1351 Vietnam - Ho Chi Minh Tel: 84-28-5448-2100	Austria - Wels Tel: 43-7242-2244-39 Fax: 43-7242-2244-393 Denmark - Copenhagen Tel: 45-4485-5910 Fax: 45-4485-2829 Finland - Espoo Tel: 358-9-4520-820 France - Paris Tel: 33-1-69-53-63-20 Fax: 33-1-69-30-90-79 Germany - Garching Tel: 49-8931-9700 Germany - Haan Tel: 49-2129-3766400 Germany - Heilbronn Tel: 49-7131-72400 Germany - Karlsruhe Tel: 49-721-625370 Germany - Munich Tel: 49-89-627-144-0 Fax: 49-89-627-144-44 Germany - Rosenheim Tel: 49-8031-354-560 Israel - Ra'anana Tel: 972-9-744-7705 Italy - Milan Tel: 39-0331-742611 Fax: 39-0331-466781 Italy - Padova Tel: 39-049-7625286 Netherlands - Drunen Tel: 31-416-690399 Fax: 31-416-690340 Norway - Trondheim Tel: 47-72884388 Poland - Warsaw Tel: 48-22-3325737 Romania - Bucharest Tel: 40-21-407-87-50 Spain - Madrid Tel: 34-91-708-08-90 Fax: 34-91-708-08-91 Sweden - Gothenberg Tel: 46-31-704-60-40 Sweden - Stockholm Tel: 46-8-5090-4654 UK - Wokingham Tel: 44-118-921-5800 Fax: 44-118-921-5820